

TEMPERATURE CONTROL SOLUTIONS



TROUBLE

Temperature control is essential to **guarantee the preservation of food and drugs**, but also to keep the storage of certain products and electronic devices in optimal conditions, such as server rooms. However, **not all temperature measurement and control devices have high precision and the most advanced technology**, so it is easy for human errors to occur or unnecessary resources of time and personnel to manually manage these systems.

SOLUTION

By Demes Introduces **New Temperature Control Solutions VESTA**, the latest technology in **temperature measurement using probes**. The temperature control devices allow working with **ranges from -20 ° C to + 50 ° C**, both in cold rooms and outdoors, with a **precision and reliability of (± 1°C)**.

The VESTA temperature control system protects sensitive products in cold rooms, freezers or warehouses.

Likewise, you can prevent possible damage thanks to the advanced system linked to the control panel, which allows real-time reports, abnormal temperature alarm and historical record, with the possibility to export up to 14 days.

SYSTEM OPERATION

Temperature control in a cold room

Knowing the ranges allowed for our products, with the VESTA system we can configure our temperature controller with probe to send alarm alerts if the temperature is higher or lower than the ranges we want (eg Min: -8 ° C / Max: 1 ° C).

We can even activate devices automatically and standalone, such as turning on the emergency compressor by a contactor relay.

TEMPERATURE CONTROL CASES

CASE 1: Normal temperature (within established ranges)

VESTA-248
Sensor + Temperature Probe

VESTA-046N/047N
Main panel

SmartHomeSec App

Example
Acceptable temperature ranges for our products

History in App / Web

Acceptable temperature ranges for our products

VESTA-248
Sensor + Temperature probe

If temperature is **<-8°C** or **>1°C**

The VESTA system will send an alarm notice immediately to the SmartHomeSec APP and the system will record and store the event in the history

CASE 2: Temperature out of range

VESTA-248
Sensor + Temperature Probe

VESTA-046N/047N
Main panel

SmartHomeSec App

Example
Acceptable temperature ranges for our products

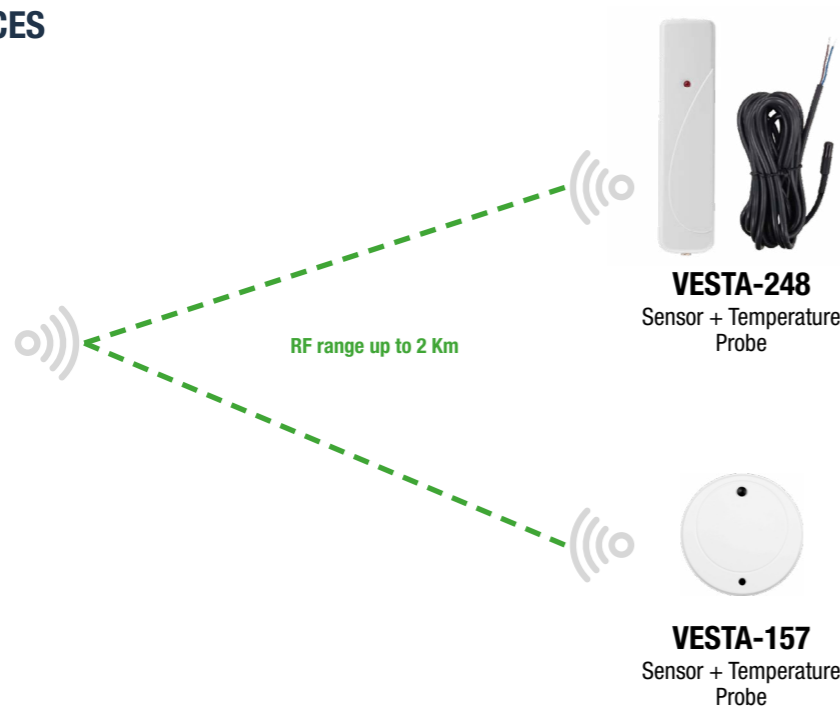
History in App / Web

¡ALARMA!

RELATED DEVICES



VESTA-046N/047N
Main panel



VESTA-248
Sensor + Temperature
Probe

Ideal for environments with high humidity or very low temperatures, such as cold rooms.



VESTA-157
Sensor + Temperature
Probe

Very compact design (Ø40 x 14mm), -10°C ~ +45°C operating temperature, ideal for indoor use.

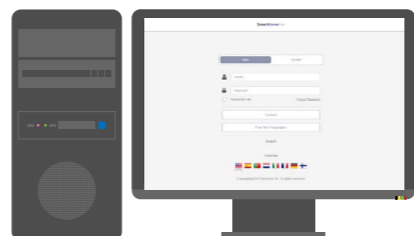
2. AUTOMATIC RULE CONFIGURATION



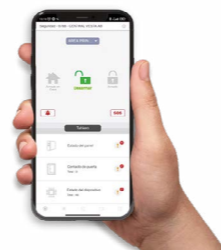
Activation rules

We can configure them using SmartHomeSec App or the SmartHomeSec web platform.

SmartHomeSec Web



SmartHomeSec App



Automatic rule configuration

Automatización
Regla

Nombre de la regla :

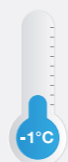
Desencadenar

Condición

Acción

1

3



Example
Acceptable
temperature limit

If this **value** is exceeded, the system sends us an **alarm**

1. Select the maximum temperature value
2. Select the action "Activate high temperature alarm"
3. Save configuration

3. SOLUTION BENEFITS



BENEFITS

- **Easy installation** and setup in less than 8 minutes
- No **wiring** required
- **High precision ($\pm 1^\circ\text{C}$)** and **reliability** of temperature sensors and probes
- Immediate **alarm notifications** to SmartHomeSec APP or GSM phone call
- Operating temperature ranges from **-20°C a +50°C**
- Daily temperature **control and record**

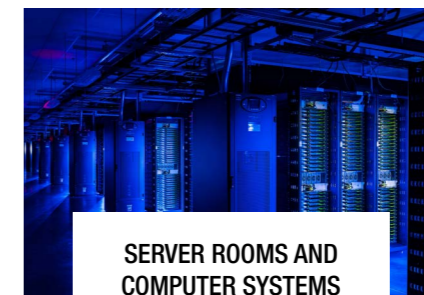
4. APPLICATION CASES



REFRIGERATORS



REFRIGERATOR
WAREHOUSE



SERVER ROOMS AND
COMPUTER SYSTEMS



www.bydemes.com

Contact our sales department for more information and discounts.